



# SPS20000 20mt

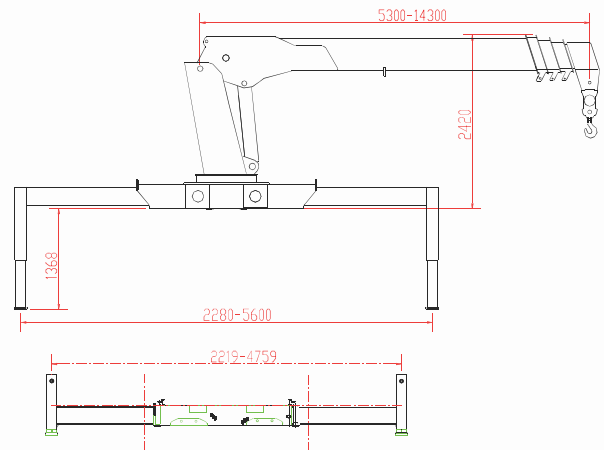
- Long Boom, Proprietary Technology, Strong Load Capacity, Wide working area
- Dual pump hydraulic system, Good adaptability to work condition, High Operating efficiency
- Ergonomic design, Comfortable and easy to operate, High degree of user friendliness
- Optimized structural design, Lighter crane weight, More transport capacity
- Large outrigger span, Good stability
- Global matching, High-end configuration, Reliable quality
- Beautiful shape, Sophisticated Technology, Durable

5.6m  
Front stabilizer  
spread

16.1m  
Max. lifting  
height

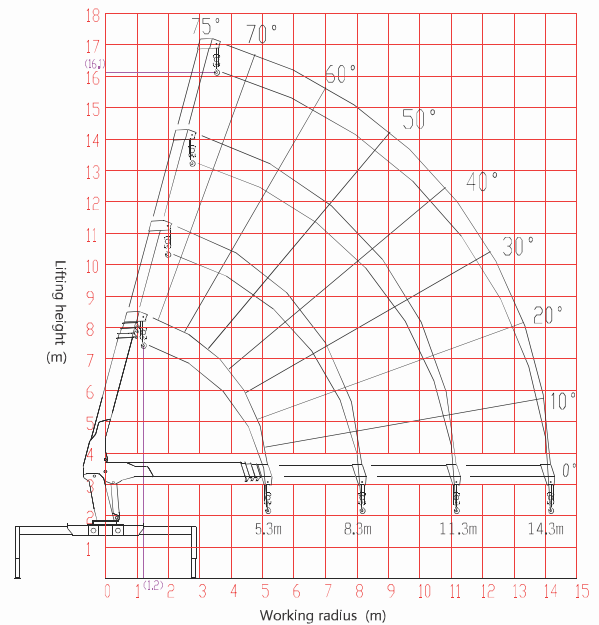
## Main technical specifications

Item	Unit	SPS20000
Max lifting load/ radius	kg/m	9000 /2.5
Max load moment	T.m	20
Boom type		The hydraulically driven synchronous telescopic
The number of boom section	section	4
Fully extend/retract time of boom	s	30/15
Operating elevation angle	°	0-75°
Front outrigger span	m	5.6
Back outrigger span (optional)	m	4.8
Max lifting height	m	16.1
Max working radius	m	14
Rated pressure of hydraulic system	Mpa	28
Hydraulic oil tank capacity	L	180
Crane weight	KG	3500
Installation space	mm	1320
Slewing angle	°	360° rotating free



## Lifting performance specifications

SPS20000 Full	extend outriggers, over side and rear Range (m)			
	5.3m	8.3m	11.3m	14.3m
2.5	9000	6410		
3	7460	6140	5470	
3.5	6400	5490	5040	3680
4	5550	4790	4470	3570
4.5	4940	4250	3920	3260
5	4410	3830	3520	2940
5.5		3470	3150	2680
6		3150	2890	2440
6.5		2890	2660	2240
7		2680	2430	2080
7.5		2470	2260	1910
8		2260	2080	1760
8.5			1910	1660
9			1790	1580
9.5			1660	1470
10			1550	1370
10.5			1470	1280
11			1390	1220
11.5				1160
12				1090
12.5				1020
13				950
13.5			1310	890
14				840
Recommended ratio	6	4	4	2



- ① With continuous technology upgrade, material configuration and technical specifications and product configurations are subject to change without notice. The pictures on the machine may include additional equipment. This information is for reference only.
- ② Crane Control position either right or left.