

## HYDRA 12 HD

3P



Capacity  
**12 T**



Boom Height  
**36 Feet**



Straight Axle  
**Heavy Duty**



Structure  
**Robust**

# SPECIFICATIONS



## RATED CAPACITY

12 Tonne at	1.9 m radius
2.5 Tonne at	8.4 m radius



## ENGINE

Make & Model	Simpson S 433 (I) – CEV BS III, 4 cylinder, water cooled diesel engine developing 48 HP @ 2200 RPM or equivalent
--------------	--



## TRANSMISSION

Drive	2 Wheel drive
Type	Heavy duty transmission developed especially for crane application. Constant mesh gearbox coupled with straight drive axle. Eight forward and two reverse speeds with high/low selector lever
Creep Speed	1.9 km/hr. ideal for crane operation
Max. Speed	29 km/hr. (unladen)
Clutch	Heavy duty clutch, wire woven, asbestos free



## STEERING

Type	Articulated power steering, hydraulically controlled through 2 double acting jacks
Articulation	Up to 56°
Turning Radius	6.75 m (approx.)



## BRAKES

Front Wheel	Pneumatic assisted hydraulic brakes
Rear Wheel	Disc brakes actuated through a slave cylinder
Parking	Hand control valve operated, Air assisted Hydraulic parking brakes at all wheels (Standard models) Hand control valve operated, Air assisted Parking brakes at Front wheels (with Air brake models)



## TYRES

Front	11.00 X 20 - 16 PR (4 nos.), Inflation pressure 110 - 115 PSI
Rear	13.00 X 24 - 12 PR (2 nos.), Inflation pressure 35 PSI. Water ballasted



## TRACK

Front	1980 mm
Rear	1680 mm



## BOOM

Telescoping	Heavy duty, 3 parts box type hydraulically operated
Derricking	Through double acting jacks



## HOIST MECHANISM

Hoist	Hydraulic winch Four falls. Rope dia 13 mm
-------	--



## HYDRAULIC SYSTEM

Pump	Vane type hydraulic pump
Control Valve	4 spool control valve with built in pressure relief valve and precision control
Hydraulic Filter	Suction line has a 100 mesh in-line strainer while return line has 25 microns full flow filter



## ELECTRICAL SYSTEM

Type	12V Single battery, Negative earth
------	------------------------------------



## CAPACITIES

Fuel Tank	38 ltrs.
Hydraulic Tank	65 ltrs.



## OVERALL DIMENSIONS

Length	11000 mm
Width	2550 mm
Height	3100 mm



## OPERATING WEIGHT (KG)

Gross Vehicle Weight	10610 kg
----------------------	----------



## SAFETY SYSTEM

- Overload audio warning system
- Safety brakes on hoist
- Cylinder guard for protection
- Visual warning against parking brakes ON
- Counter balance protection valve in the lift line against hose burst



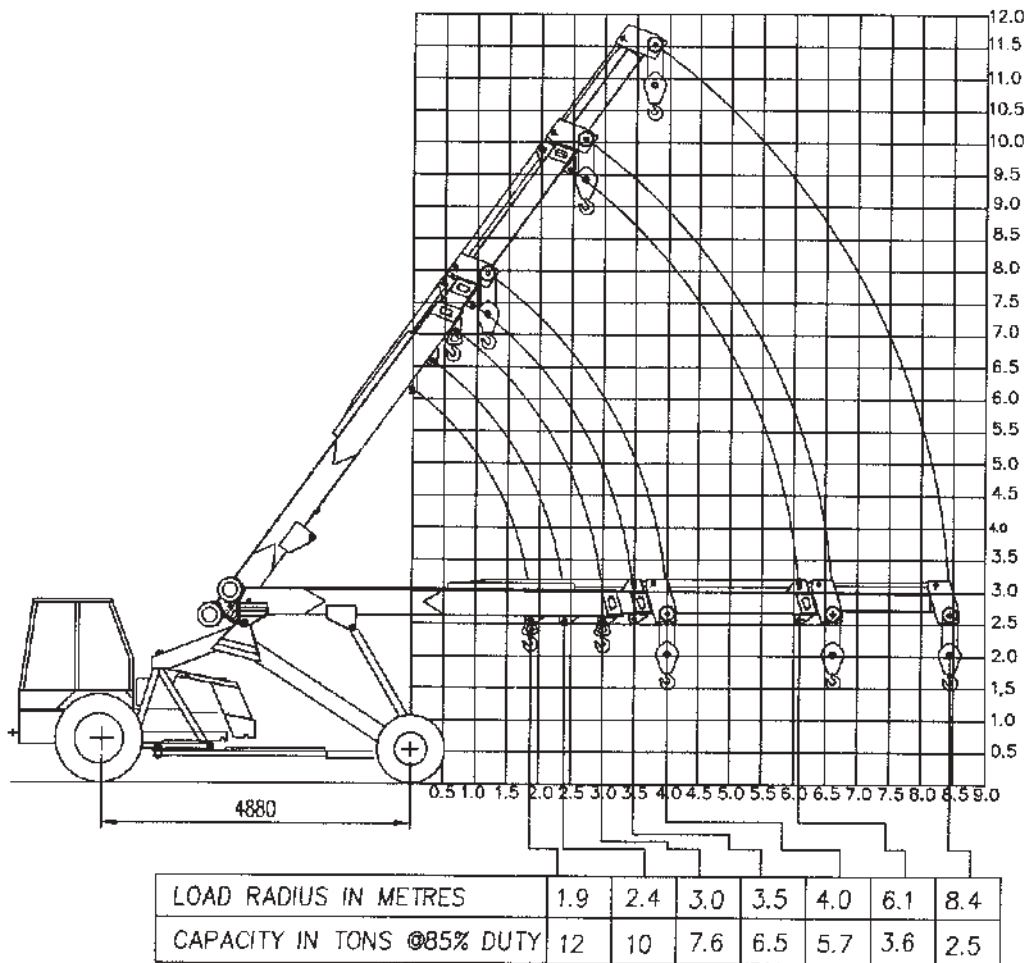
## STANDARD ACCESSORIES

- All Weather Cabin
- Turn & Reverse Lamp
- Rear View Mirror
- Over Hoist System
- Lift Cylinder Guard
- Front Bumper
- Reflectors



## OPTIONAL ACCESSORIES

- Tool Box
- Tyre Mud Guard
- Fire Extinguisher
- Safe Load Indicator (SLI)
- 14 x 24 Heavy Duty Tyres
- Air Brakes on Front Wheel
- Over Hoist & Hydraulic Cutoff Kit
- Steering Wheel
- Spark Arrestor
- Heavy Duty Bumper



Rated loads are calculated for operation on leveled surface.

## FEATURES



### RELIABILITY

Rugged structures for heavy duty application.



### TRANSMISSION

Heavy duty straight axle with constant mesh transmission.



### CABIN

Ergonomically designed spacious cabin with modern dashboard for utmost operator comfort and operation.



### BETTER SAFETY

Only PnC in industry with Double Overload Warning Spring.



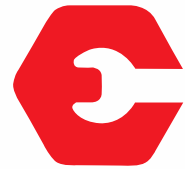
### INCREASED STABILITY

At fully articulated condition. Wider lift cylinders' span (400 mm).

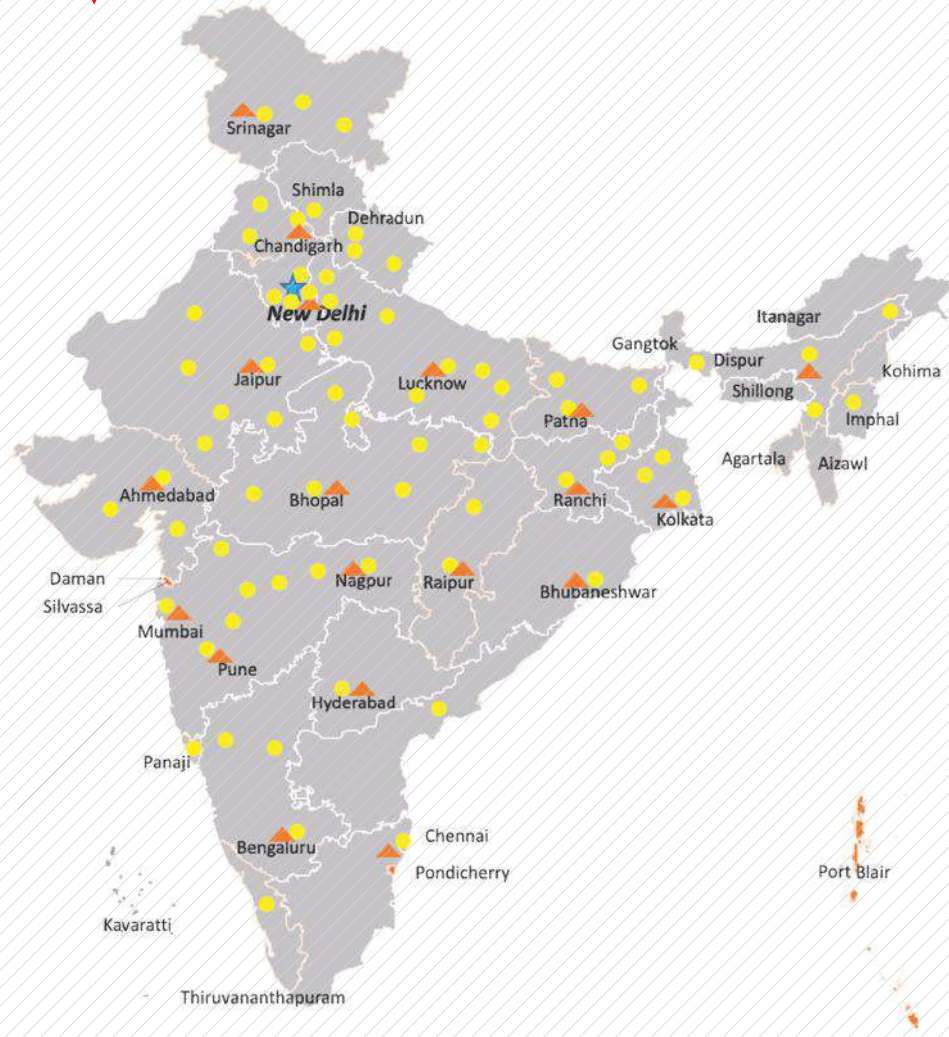


### ENGINE

BS III (CEV compliant), category engine with high on power / torque & low on fuel consumption & maintenance.



## OUR REACH



★ Head Office | ▲ 17 Business Center | ● 73 Dealers | ■ 825+ Customer Touch points (CTP)



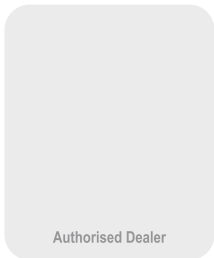
**Toll Free No.:**  
**1800-180-4488**  
(Timings: 9.30 am - 6.00 pm, Monday to Friday)

e-mail: [ece.help@escorts.co.in](mailto:ece.help@escorts.co.in)

**Escorts Kubota Limited (Formerly Escorts Limited) Construction Equipment**  
Plot No. 219, Sector- 58, Ballabhgarh- 121 004, Faridabad, Haryana (INDIA)  
Tel.: 0129-2306574/2306598/2306571  
Fax: 0129-2306572 **Website:** [www.escortsgroup.com](http://www.escortsgroup.com)



Download Customer App for more details



(Accessories as shown in the picture may not be the part of standard fitment and are subject to change without prior notice.)

MKT/22/Hydra 12HD 3P