

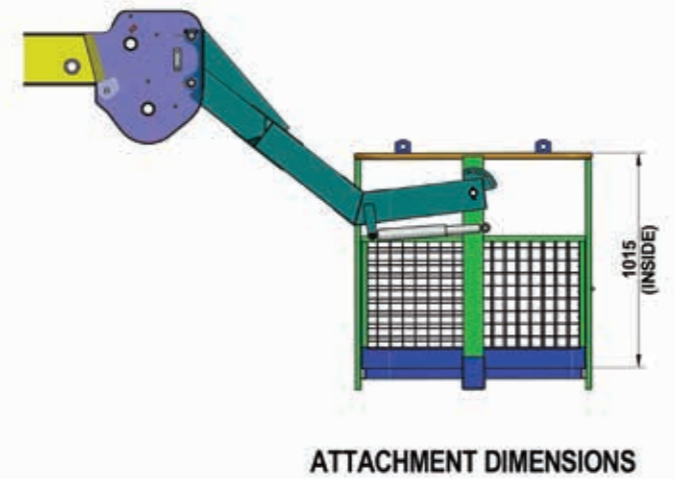
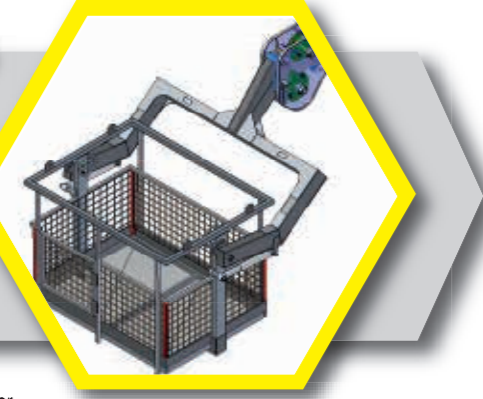
ACCESSORIES

MAN CARRYING BASKET

ATTACHMENT SPECIFICATION		
ATTACHMENT WEIGHT	KG	240
MAX. CAPACITY	KG	235
NO. OF PERSONS	N*	2
PLATFORM LENGTH	mm	1440
PLATFORM WIDTH	mm	1070

Intended use

The machine has been designed to lift people and handle small tool, max load 235 kg or 2 persons



BE CAREFUL!

When in the firm the same machine is to be used by more than one operator, working instructions as well as the use and maintenance manual must be conveyed to all the operators in charge of the machine.

Toll Free No.:
1800-180-4488
(Timings: 9:30 am - 6:00 pm, Monday to Friday)

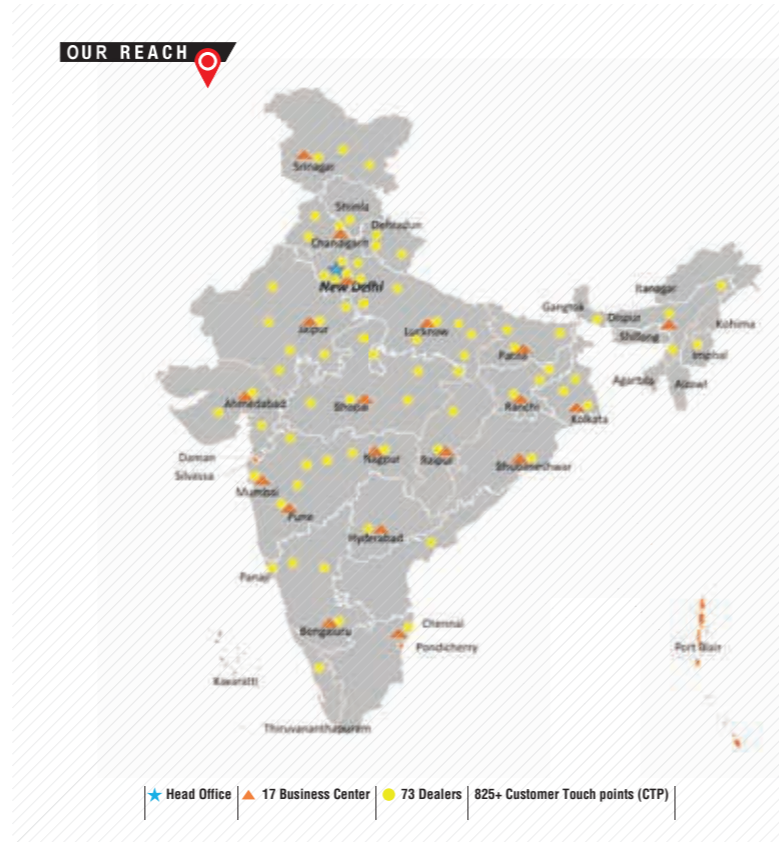
e-mail: ekl_g.ecce.marketing@escortskubota.com

Escorts Kubota Limited (Construction Equipment)
Plot No. 219, Sector- 58, Ballabhgarh- 121 004, Faridabad, Haryana (INDIA)
Tel.: 0129-2306574/2306598/2306571
Fax: 0129-2306572 Website: www.escortsgroup.com

*The information contained in this leaflet is intended to be of a general nature only. • We reserve the right to changed specifications without notice. • All Dimensions and weights are variable within +/-5%.

F23

Kubota
Escorts Kubota Limited



ADDRESS:

North Zone
ESCORTS KUBOTA LTD. - CONSTRUCTION EQUIPMENT
4th Floor 409, Jasola Vihar,
Elegance Tower, Near Apollo Metro Station,
New Delhi – 110019

East Zone
ESCORTS KUBOTA LTD. - CONSTRUCTION EQUIPMENT
Eco Centre, Ambuja Neotia,
609, 6th Floor, EM Block,
Salt Lake Sector-V, Kolkata – 700091

West Zone
ESCORTS KUBOTA LTD. - CONSTRUCTION EQUIPMENT UNIT 1,
3rd Floor, A-Wing, Times Sqaure,
Andheri - Kurla Road, Opp. Mittal Industrial Estate,
Andheri (East), Mumbai – 400059

South Zone
ESCORTS KUBOTA LTD. - CONSTRUCTION EQUIPMENT
Subham Square, 1st Floor, S.No.41/9, 1st Main Road,
Karambakkam, Porur, Chennai – 600116.



GET IT ON
Google Play
Download Customer App
for more details

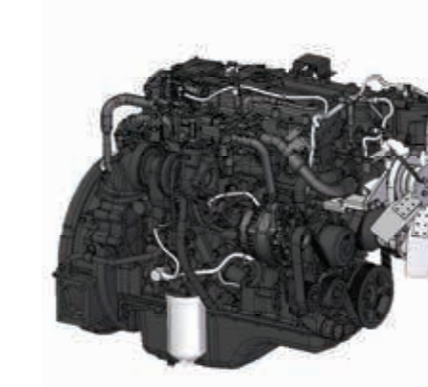
Authorised Dealer

MKT23 1/F 23

(Accessories as shown in the picture may not be the part of standard fitment and are subject to change without prior notice.)

Kubota
Escorts Kubota Limited

F23



NOW WITH

VECV-494 BS-IV series engine

COMFORTABLE LOW PEDAL FORCE

ECONOMICAL XTRA FUEL SAVING

DURABLE XTRA CLUTCH LIFE

POWERFUL HIGH BACKUP TORQUE

ADVANCE 500 HRS SERVICE INTERVAL



HEAVY DUTY AXLE

40 t capacity front axle for heavy load application



*Image for Reference purpose only



Capacity
23 t



Boom Height (With Fly Jib)
22.3 m



Snatch Block
15 T Lifting



Creep Speed
1.3 km/h



Axle
Heavy Duty

SPECIFICATIONS

RATED CAPACITY

23 Tonnes at	1.5 m radius
900 kg at	16.6 m radius
Max Height	22.3 m
SWL based on 85% stability & strength (IS 4573)	

VEHICLE PERFORMANCE

Speed Max	40 km/h
Creep Speed	1.3 km/h

DRIVE

4 Wheel Drive

ENGINE (BS IV)

Volvo - Eicher make CEV BS IV Diesel Engine, Model E494TCI - High Pressure Common Rail System (HPCR) Technology, Turbo Charged Water Cooled, ECU Control Engine Management System, Developing 74 Kw/101HP @ 2200 RPM or Equivalent Engine.

TRANSMISSION & CLUTCH

Engine is coupled with Synchronesh Transmission Gear Box and Auxiliary Gear Box with high/low & 2WD/4WD mode selector

Clutch Single, dry type friction clutch plate (self adjusting)

Clutch Actuation Pneumatic Assisted Hydraulic clutch

Speeds 10 forward and 2 reverse

Gradeability 40% unladen with AGB

TYRES

8 number-12 x 24-20 PLY

STEERING

Full power orbital with twin hydraulic double acting rams 35° articulation on either side

HYDRAULIC SYSTEM

Main Pump	Tandem Hydraulic vane pump
Control valve	Main control valve 3 spool double acting with a built in relief & auxiliary valves
Outrigger	2 spool double acting type
Control valve	
Drag Winch	Single spool double acting
Control valve	

AXLES

Front	Heavy duty rigidly mounted front wheel drive axle
Rear	Mounted with semi-elliptical springs
Make	TATA

ELECTRICAL SYSTEM

24V, DC

BOOM

4 parts boom, 3 parts hydraulically powered & fully synchronized, 4th part power extended & manually pinned for safety

Luffing Range -3° to 65°

HOIST

15T hydraulically operated with 6 falls Built in safety brakes

WHEEL BASE

4 880 mm

DIMENSIONS

Overall Length	10 900 mm
Overall Width	2 700 mm
Overall Height	3 300 mm

WHEEL TRACK

Front	1 960 mm
Rear	1 960 mm

OPERATING WEIGHT TRAVEL WORK

Front Axle	9 230 kg	8 900 kg
Rear Axle	10 130 kg	13 050 kg
Total	19 360 kg	21 950 kg

TURNING RADIUS

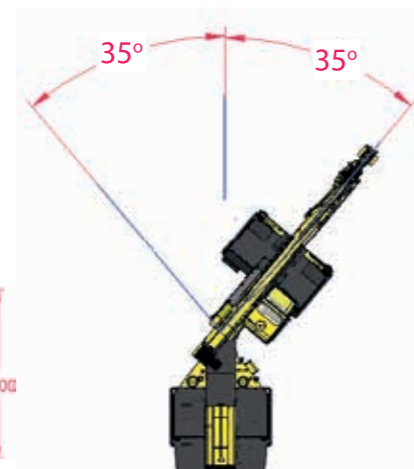
7.85 m

STANDARD ACCESSORIES

All Weather Cabin with Unrestricted Visibility
Rear View Camera with LCD
Equipment Monitoring System (telematics)
Front Outriggers
Wheel Guards
FM Radio and Mobile Charger
Battery Cut off Switch

OPTIONAL ACCESSORIES

Safe Load Indicator with Hydraulic Cut Off
Man Carrying Basket (self adjusting)
Fire Extinguisher
Fly Jib
Helper Seat Platform
Drag Winch



F23

LOAD CHART F23

23T SAFE CRANE
4P, 20.1 mtrs.

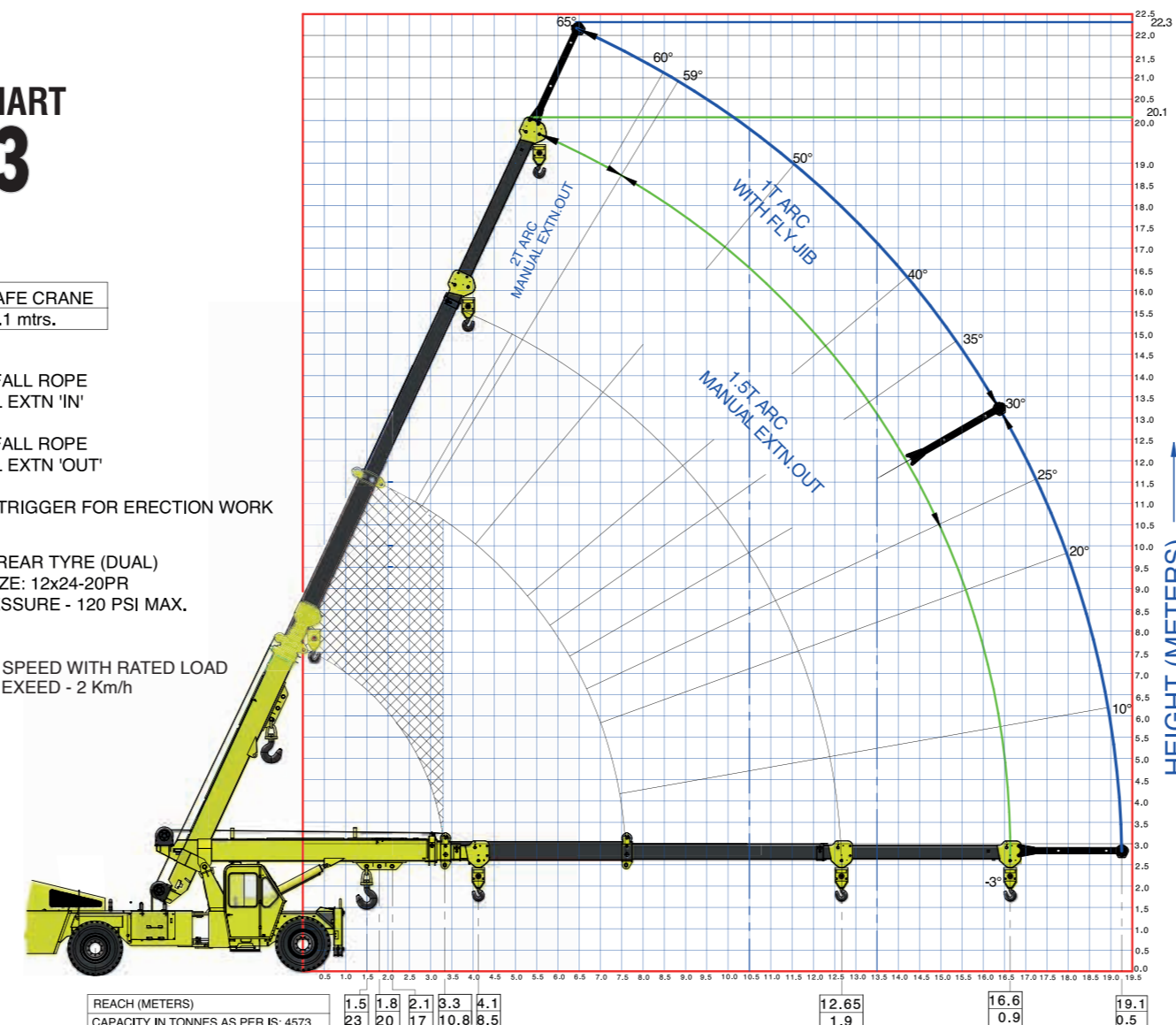
USE -6 FALL ROPE
MANUAL EXTN 'IN'

USE -4 FALL ROPE
MANUAL EXTN 'OUT'

USE OUTRIGGER FOR ERECTION WORK

FRONT/REAR TYRE (DUAL)
TYRE SIZE: 12x24-20PR
AIR PRESSURE - 120 PSI MAX.

TRAVEL SPEED WITH RATED LOAD
NOT TO EXCEED - 2 Km/h



Rated loads are calculated for operation on leveled surface.

FEATURES



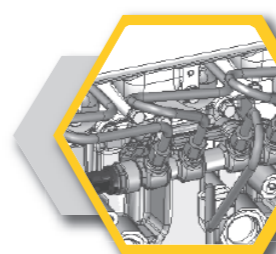
HYDRO- PNEUMATIC CLUTCH

Low effort hydro pneumatic clutch to reduce operator fatigue.



ECU EMS SYSTEM

ECU EMS – Electronic Control Unit for Engine Management System for Engine diagnosis and troubleshoot.



HPCR SYSTEM

HPCR – High Pressure Common Rail System - HPCR provide cleaner exhaust, deliver more horsepower and fuel efficiency per displacement.

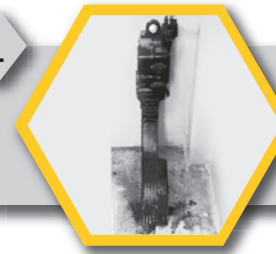


CLUSTER

Single Digital Cluster with all gauges, fault code detection for engine system, date and time display feature, less number of wiring harness.

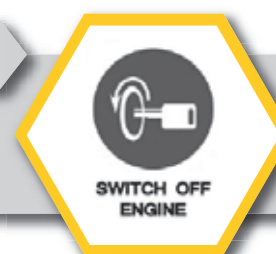
ELECTRONIC ACCELERATOR PEDAL

Accelerator Pedal - Low effort electronic accelerator pedal reduce operator fatigue.



IGNITION ON/ OFF

Ignition key to switch off engine, no more use of stop cable to engine put off.



ROCKER SWITCHES

Rocker Switch with more reliable and better aesthetic appearance, low operator fatigue.



*Photo may be change w.r.t actual in equipment

F23 : DIMENSIONS (Ref.) & AREA OF OPERATION

