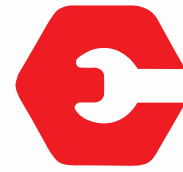


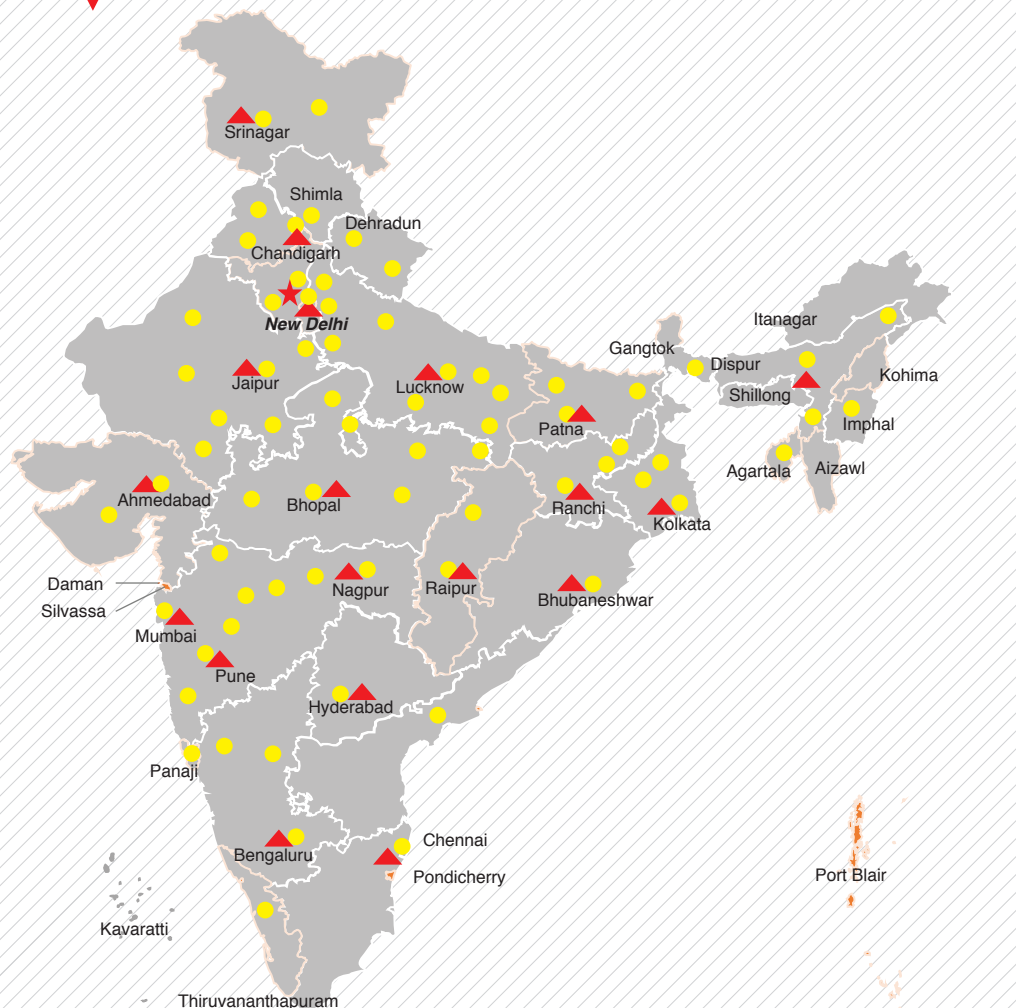
# EC 3664



# ESCORTS CONSTRUCTION EQUIPMENT



OUR REACH



★ Head Office | ▲ 17 Business Center | ● 73 Dealers & 250+ branches | ■ PAN INDIA - 825+ Network to support as Service and Spares

# EC 3664

## MINI TANDEM ROLLER



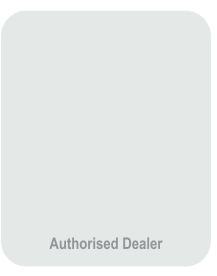
(Accessories as shown in the picture may not be the part of standard fitment and are subject to change without prior notice.)

MKT/22-1/EC3664



**Toll Free No.: 1800-180-4488**  
 (Timings: 9.30 am - 6.00 pm, Monday to Friday)  
 e-mail: ece.help@escorts.co.in

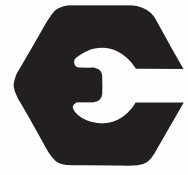
Escorts Construction Equipment: Plot No. 219, Sector- 58, Ballabhgarh- 121 004, Faridabad, Haryana (INDIA) Tel.: 0129-2306574/2306598/2306571 Fax: 0129-2306572 Website: www.escortsgroup.com



- Operating Weight  
**3.3T**
- Compaction Force  
**Highest**
- Traction  
**High**
- Gradeability  
**High**
- Ground Clearance  
**High**
- Maintenance Cost  
**Low**

•The information contained in this leaflet is intended to be of a general nature only. •We reserve the right to changed specifications without notice. • All Dimensions and weights are variable within +/-5%.

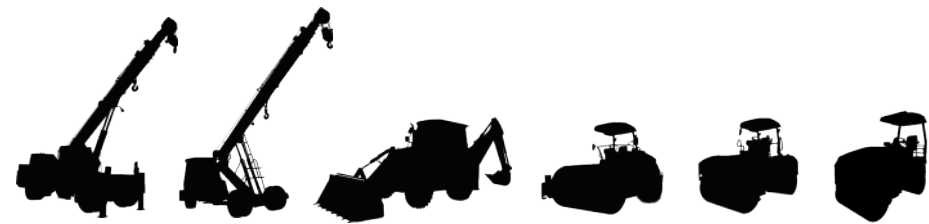
**EC 3664**



**ESCORTS**  
CONSTRUCTION EQUIPMENT



# EC 3664



## SPECIFICATIONS

# EC 3664

| ENGINE                               |  |         |                                       |
|--------------------------------------|--|---------|---------------------------------------|
| Make and Model                       | Escorts E3.249NA   |         |                                       |
| Power Rating as per ISO 3046         | Water Cooled, 3 cylinder<br>BS - III (CEV) Emission norm<br>Diesel Engine developing<br>47 HP @ 2300 RPM |         |                                       |
| DRIVE                                |  |         |                                       |
| Drive                                | Infinitely variable hydrostatic<br>all wheel drive to both drums   |         |                                       |
| STEERING                             |  |         |                                       |
| Articulated Steering                 | Deg  | ± 30°   |                                       |
| Oscillation Angle                    | Deg  | ± 10°   |                                       |
| Crab Steering                        | mm   | ± 48    |                                       |
| WEIGHT                               |  |         |                                       |
| Operating Weight                     | kg   | 3300    |                                       |
| Axle Load - Front                    | kg   | 1700    |                                       |
| Axle Load - Rear                     | kg   | 1600    |                                       |
| Static Liner Load Front              | kg/cm  | 14.2    |                                       |
| Static Liner Load Rear               | kg/cm  | 13.3    |                                       |
| Max. Applied force front drum        | kgf  | 6500    |                                       |
| Max. Applied force rear drum         | kgf  | 6400    |                                       |
| Total Compaction force               | KN   | 104/129 |                                       |
| SPEED                                |  |         |                                       |
| Working                              | km/hr  | 0-4     |                                       |
| Transport                            | km/hr  | 0-12    |                                       |
| GRADEABILITY                         |  |         |                                       |
| Gradeability with Vibration          | %  | 35%     |                                       |
| Gradeability without Vibration       | %  | 40%     |                                       |
| CAPACITY                             |  |         |                                       |
| Fuel Tank                            | ltr  | 50      |                                       |
| Hydraulic Oil Tank                   | ltr  | 40      |                                       |
| Water Tank                           | ltr  | 200     |                                       |
|                                      |  |         | (Rear - 130 ltrs/<br>Front - 70 ltrs) |
| VIBRATION SYSTEM                     |  |         |                                       |
| Frequency - Low / High               | Hz   | 55/64   |                                       |
| Nominal Amplitude                    | mm   | 0.6     |                                       |
| Vibration - 2 Stage                  | Front and Rear drums/Front drum,<br>Auto vibration Cut-off above<br>working speed                        |         |                                       |
| BRAKES                               |  |         |                                       |
| Service, Parking, Emergency<br>Brake | Hydrostatic, Spring Loaded,<br>hydraulically released brakes<br>on both drums                            |         |                                       |

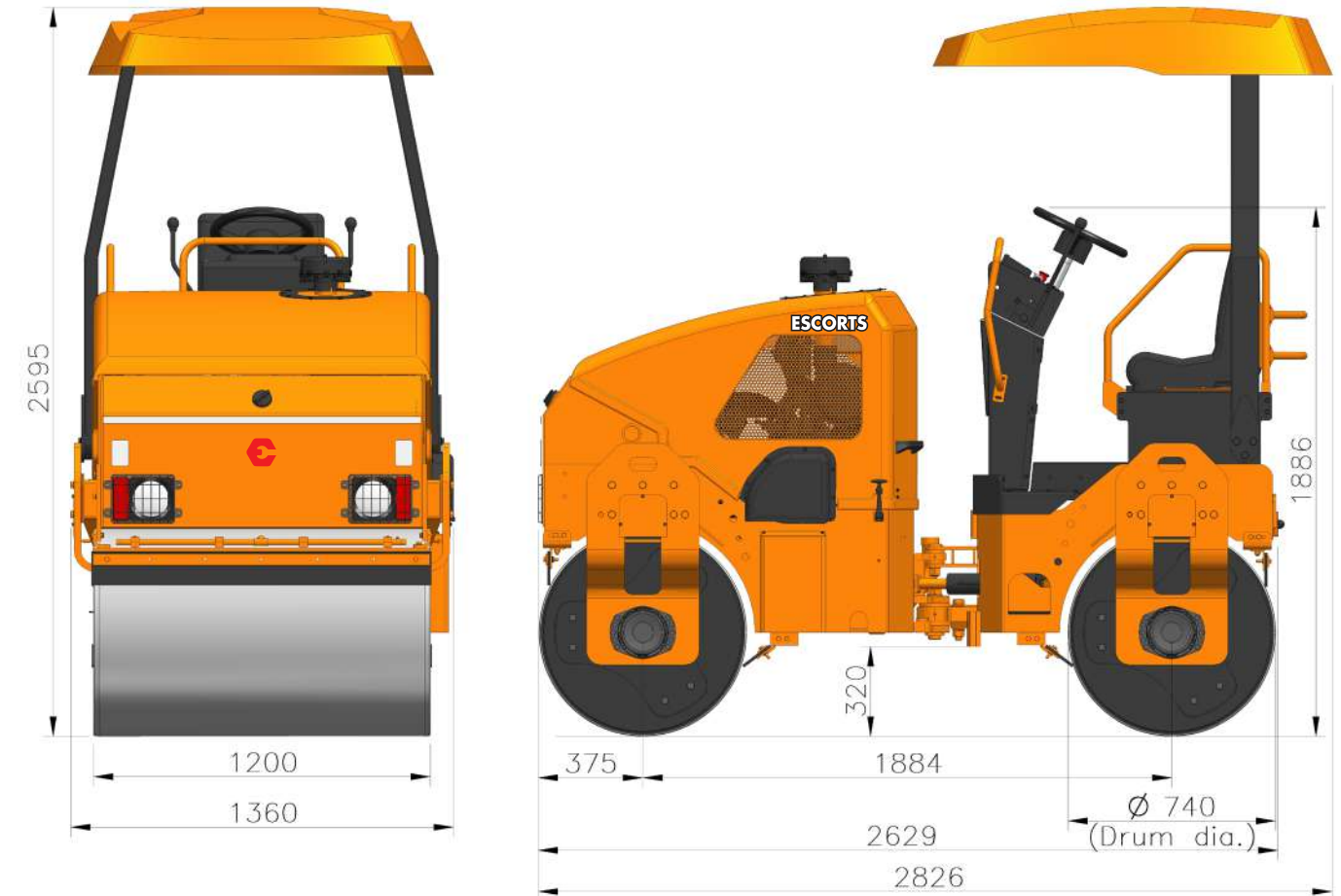
| DIMENSIONS                 |    |           |  |
|----------------------------|----|-----------|--|
| Overall Width              | mm | 1360      |  |
| Overall Length             | mm | 2826      |  |
| Overall Height with canopy | mm | 2595      |  |
| Turning Radius-outer/inner | mm | 4142/2942 |  |
| Min. Ground Clearance      | mm | 320       |  |
| Drum Diameter              | mm | 740       |  |
| Drum Width                 | mm | 1200      |  |
| Shell Thickness            | mm | 13        |  |

- ### STANDARD EQUIPMENT
- Canopy with Sun Top
  - Switchable to both/ single drum vibration
  - RPM Gauge
  - Sprinkler Indicator
  - Instrument Panel with a range of control instruments including Hour Meter & Light Equipment

- ### SAFETY FEATURES
- Neutral Start Safety
  - Emergency Stop Switch
  - Reverse Alarm
  - Air Filter Clog Indicator
  - Hydraulic Filter Clog Indicator
  - Low Engine Oil Pressure Indicator
  - Hydraulic Oil Temperature Gauge
  - Battery Charging Indicator
  - Starter Safety Relay
  - Coolant Temperature Gauge & Indicator
  - Volt Meter

- ### OPTIONAL EQUIPMENT
- Cabin
  - Demister
  - Instrument Panel Cover
  - Cold Start Kit

- ### KEY FEATURES
- Suited for shoulder compaction/service roads
  - Highest Total Compaction Force in the industry
  - High ground clearance of 320 mm for working on uneven surface
  - High kerb clearance of 590 mm for effective compaction along culvers
  - High static linear load in the industry
  - Low turning radius



## FEATURES



**ENGINE**  
ESCORTS E3.249NA is high on power and traction. Low on fuel consumption and maintenance



**GRADEABILITY**  
High gradeability making it versatile for all applications



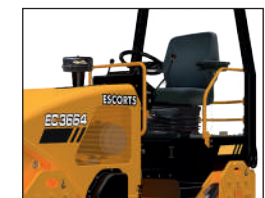
**COMPACTION FORCE**  
Optimized setting amplitude, frequency and optimum distribution of weight helps in achieving high compaction



**STEERING ANGLE**  
Articulation Steering Angle is high for low turning radius.



**INSTRUMENT PANEL**  
Instrument Panel with conveniently placed switches and buttons for easy access & reach



**SEATING**  
Driver's Seat is adjustable and sliding with a canopy for operator's comfort and clear visibility