

WHEN YOU NEED EXTRA
DIGMAX SUPER

**6 PILLAR CABIN
MORE SPACE & VISIBILITY**



Fuel
Efficient



Reach
Higher



Breakout Force
Higher



Visibility
Higher



Cycle Time
Fast

SPECIFICATIONS



ENGINE

- Proven, powerful and fuel efficient Escorts E4.346CRS4 water cooled turbo charged diesel engine.
- Gross power: 55 kw (74.5HP) @ 2000 RPM
- Max Torque (Gross): 340Nm @ 1400 ± 50 RPM
- CEV - IV emission norms



HYDRAULICS

- Hydraulic pump - Tandem Gear Pump
- Maximum flow (both pumps) 116 lpm @ 2000 RPM
- System main relief setting 225 bar
- Fixed flow, open centre two pump unloading energy efficient hydraulic system.



TRANSMISSION

- Four speed (4F, 4R gear) Syncro shift reversing shuttle transmission provides superior traction, gradeability higher force while entering pile or during dozing operation.
- Neutral start provision prevents starting when shuttle is engaged.
- Gear lever with transmission disconnect switch adds to the overall ease of gear shifting.



WEIGHT

- 2WD : 8190 Kg
- 4WD : 8350 Kg



TRAVEL SPEED

- | | |
|------------------------|-----------------------------|
| | F \ R gear |
| • 1 st Gear | 5.3 km/h / 4.6 km/h |
| • 2 nd Gear | 8.5 km/h / 7.0 km/h |
| • 3 rd Gear | 18.2 km/h / Not recommended |
| • 4 th Gear | 36.0 km/h / Not recommended |



BRAKES

- Service Brakes: Hydraulically actuated dual line, self adjusting, oil immersed, multi disc type on rear axle
- Parking Brakes: Hand-operated caliper disc brakes



AXLES

- 2WD : Front steer axle with 16 deg oscillation for maximum ground contact in undulated condition
- 4WD : Front drive and steer axle with 12 deg oscillation for maximum ground contact in undulated condition
- Rear drive axle, rigidly mounted to chassis



STEERING

- Hydrostatic power steering in front wheel
- Hydraulic supply from pump via priority valve for quick response steering
- Working pressure: 120 bar



TYRES

- Front : 2WD 9.00 x 16 – 16 PR
4WD 12.5 x 80 – 12 PR
- Rear : 16 x 9 – 28 – 12 PR IDT



SERVICE REFILL CAPACITIES

- | | |
|------------------------|--------|
| • Hydraulic system oil | 80 l |
| • Fuel tank | 134 l |
| • Engine coolant | 15 l |
| • Engine oil | 11.5 l |
| • Transmission oil | 16.5 l |
| • Rear axle oil | 17.1 l |
| • Brake reservoir oil | 1.0 l |



EQUIPMENT MONITORING SYSTEM

GPS + GSM based equipment monitoring system is a standard fitment and provides SMS alerts for effective equipment management and acts as a diagnostic tool.



WARNING MESSAGE-SMS, MAIL, ONLINE

- Engine Oil Pressure
- Battery Charging Status
- Engine Coolant Temperature
- Hydraulic Oil Temperature
- Transmission Oil Temperature
- Machine Idle Information
- Fuel Level Information



OPTIONAL ATTACHMENTS

- Heavy Duty Rear Tyres: 14x25-20 PR
- Rock Breaker
- Trenching Buckets - 0.09 m³, 0.12 m³, 0.18 m³
- Special Purpose Bucket - 0.30 m³
- Coal Bucket - 1.5 m³
- Multi Purpose (6-in-1) Bucket
- 300 mm Trench Bucket (Optical Fibre Cable Laying Application)



ELECTRICAL

- 12V Electrical System supported by 150AH maintenance free battery, 90 Amp alternator & safety controller starter motor to avoid over cranking
- Outrigger engagement warning for the safety of equipment
- FM radio & music system

NOTE

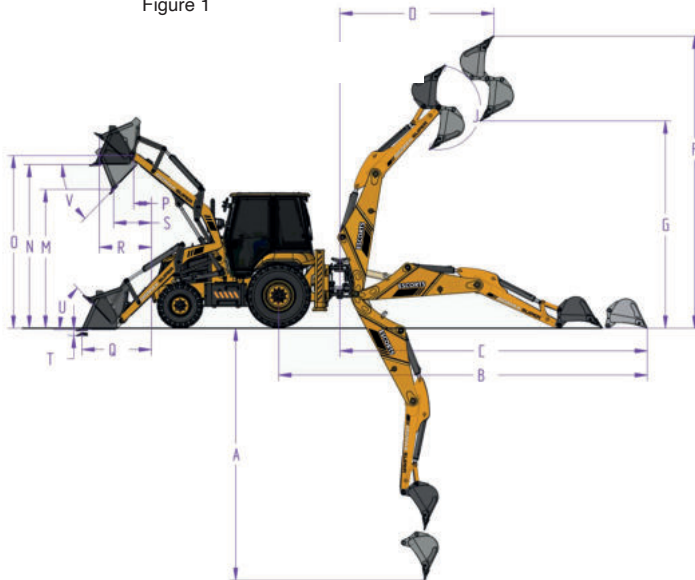
All dimensions, Weights, timings mentioned are with standard tyres. Dipper, Buckets are variable within ± 5% ECE has the right to change values given & design shown without giving a notification.

Technical modification reserved. All dimensions & weights are variable within ± 5% over indicated values.

LOADER PERFORMANCE (Figure 1)

| | | |
|--|-----------|----------------|
| M : Dump height (Cutting edge) | 3.00 | m |
| N : Load over height (Cutting edge) | 3.51 | m |
| O : Pin height (Cutting edge) | 3.70 | m |
| P : Pin forward reach | 0.43 | m |
| Q : Reach at ground | 1.57 | m |
| R : Max reach at full height | 1.22 | m |
| S : Reach at full height-Bucket dumped | 0.85 | m |
| T : Below ground level dig depth | 0.13 | m |
| U : Rollback at ground | 45 | deg |
| V : Dump angle | 45 | deg |
| Bucket breakout force | 6425 | kgf |
| Loader arm breakout force | 5777 | kgf |
| Payload | 1980 | kg |
| Return to Dig | Available | |
| Sell evelling | Available | |
| Loader Bucket Capacity | 1.2 | m ³ |

Figure 1



EXCAVATOR PERFORMANCE (Figure 1 & 2)

| | | |
|---|------|----------------|
| A : Max dig depth (bucket in dump position) | 4.80 | m |
| B : Reach ground level to rear wheel center | 6.97 | m |
| C : Reach ground level to slew center | 5.65 | m |
| D : Reach at full height to slew center | 2.23 | m |
| E : Side reach to center line of machine | 6.00 | m |
| F : Max working height (Stab's fully out) | 6.30 | m |
| G : Max load over height (Stab's fully out) | 4.39 | m |
| H : King post travel | 1.00 | m |
| J : Bucket rotation power | 187 | deg |
| Bucket tear out force | 6018 | kgf |
| Dipper tear out force | 3250 | kgf |
| Lift capacity to bucket pivot at full reach (SAE J31) | 1554 | kgf |
| Co-oxial Carriage | | |
| Excavator Bucket capacity | 0.26 | m ³ |

Figure 2

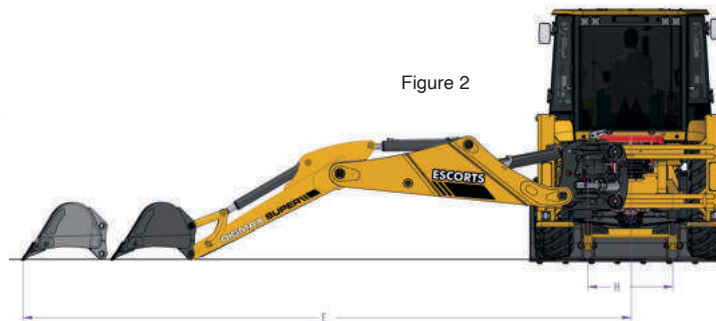


Figure 3



STATIC DIMENSIONS (Figure 3,4 & 5)

| | | |
|--------------------------------------|------|---|
| AA : Overall length (transport mode) | 6.28 | m |
| AI : Overall length (travel mode) | 7.85 | m |
| BB : Wheel base | 2.14 | m |
| CC : Rear wheel to slew center | 1.38 | m |
| DD : Minimum ground clearance | 0.35 | m |
| EE : Slew ground clearance | 0.59 | m |
| GG : Height to top of cab | 2.88 | m |
| HH : Overall height | 3.78 | m |
| JJ : Track width - Rear | 1.75 | m |
| KK : Track width - Front | 1.87 | m |
| LL : Width over bucket | 2.38 | m |
| LI : Width (transport mode) | 2.56 | m |

Figure 4

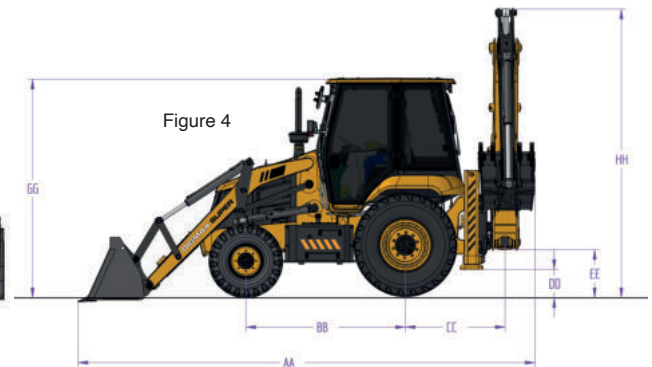


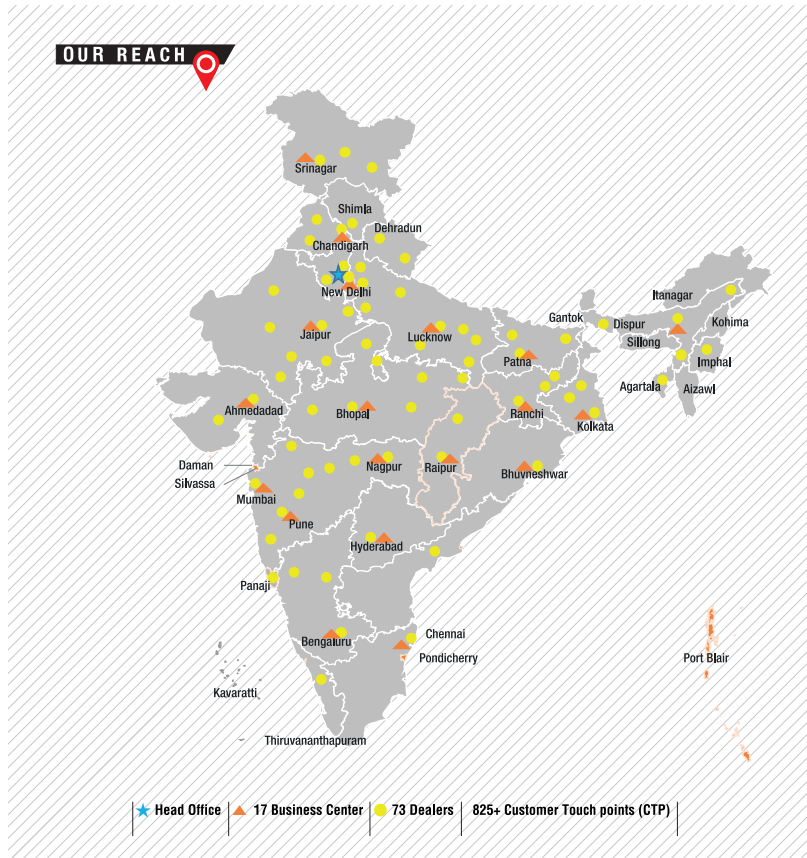
Figure 5



NOTE

All dimensions, weights, timings mentioned are with standard tyres. Dipper, buckets are variable within $\pm 5\%$ ECE has the right to change values given & design shown without giving a notification.

DIGMAX SUPER



ADDRESS:

North Zone

ESCORTS KUBOTA LTD. - CONSTRUCTION EQUIPMENT
4th Floor 409, Jasola Vihar,
Elegance Tower, Near Apollo Metro Station,
New Delhi – 110019

East Zone

ESCORTS KUBOTA LTD. - CONSTRUCTION EQUIPMENT
Eco Centre, Ambuja Neotia,
609, 6th Floor, EM Block,
Salt Lake Sector-V, Kolkata – 700091

West Zone

ESCORTS KUBOTA LTD. - CONSTRUCTION EQUIPMENT UNIT 1,
3rd Floor, A-Wing, Times Square,
Andheri - Kurla Road, Opp. Mittal Industrial Estate,
Andheri (East), Mumbai – 400059

South Zone

ESCORTS KUBOTA LTD. - CONSTRUCTION EQUIPMENT
Subham Square, 1st Floor, S.No.41/9, 1st Main Road,
Karambakkam, Porur, Chennai – 600116.



Toll Free No.:
1800-180-4488

(Timings: 9.30 am - 6.00 pm, Monday to Friday)

Escorts Kubota Limited (Construction Equipment)

Plot No. 219, Sector- 58, Ballabhgarh- 121 004, Faridabad, Haryana (INDIA)

Tel.: 0129-2306574/2306598/2306571

Fax: 0129-2306572 Website: www.escortsgroup.com

e-mail: ekl_g.ece.marketing@escortskubota.com



Download Customer App
for more details

Authorised Dealer

•The information contained in this leaflet is intended to be of a general nature only. •We reserve the right to changed specifications without notice. • All Dimensions and weights are variable within +/-5%.

(Accessories as shown in the picture may not be the part of standard fitment and are subject to change without prior notice.)

MKT/23-1/DIGMAX SUPER